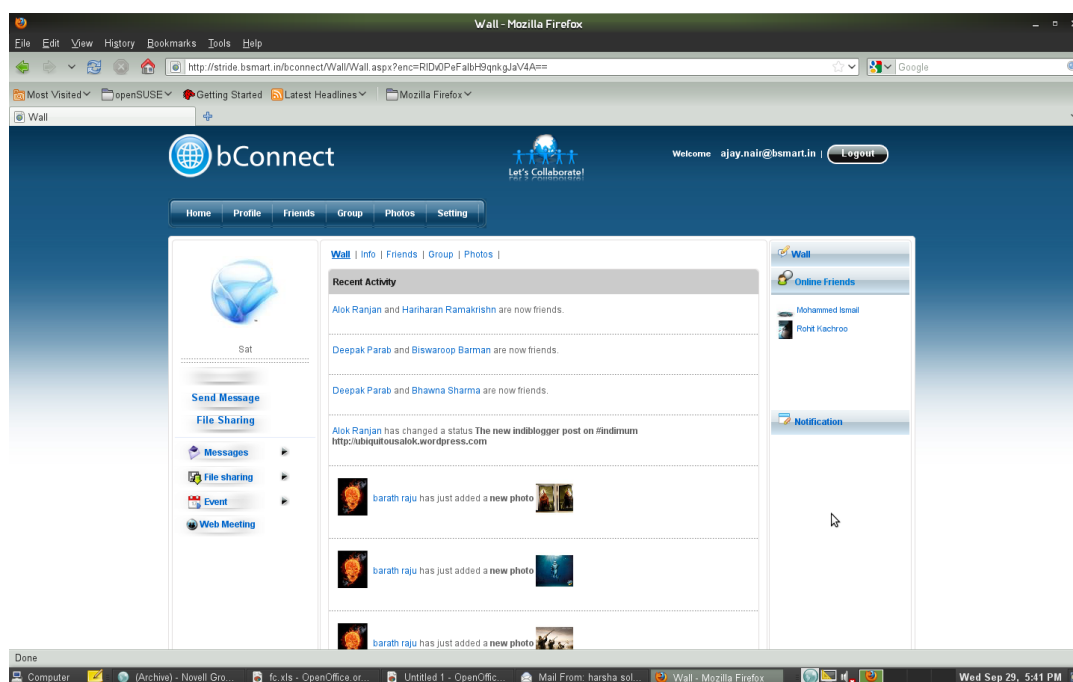
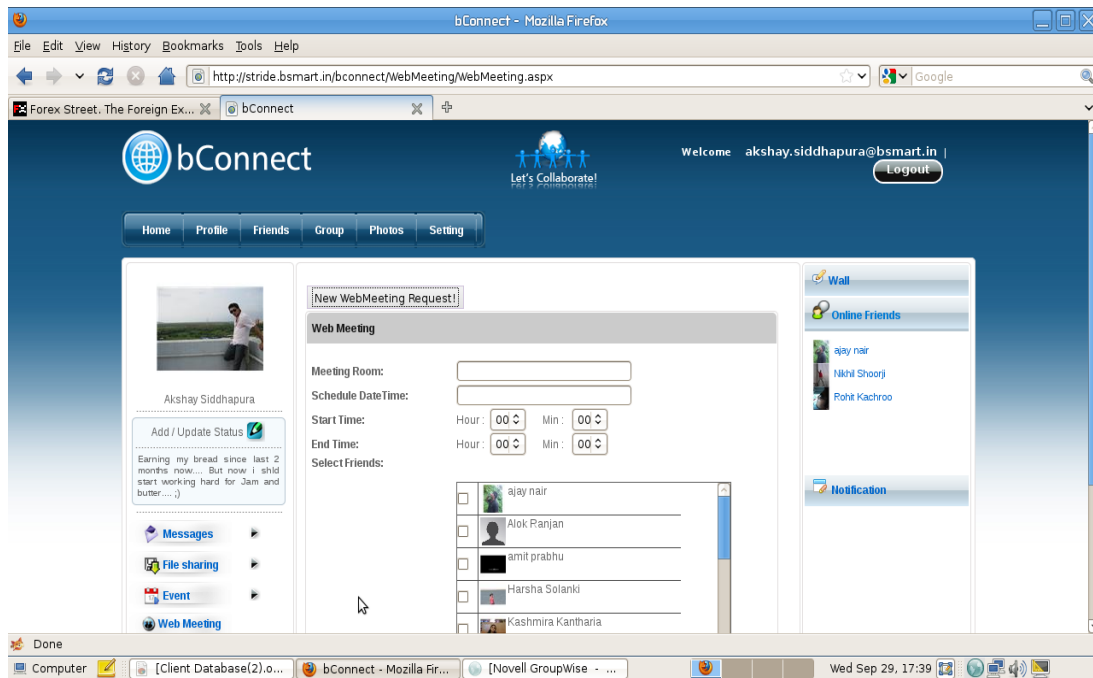


Social networking is rapidly becoming the preferred choice for communication for people of all ages. With organizations facing a 12.5% loss in productivity owing to employees averaging an hour a day on social networking websites, restrictive measures are bound to follow. 17% of organizations have monitored their employees' activities on networking portals. 10% of organizations have taken action against employees who have violated social networking policies and 8% of them have gone to the extent of terminating an employee for the same. However, with Social Networking having grown twice as fast as Email and now having a greater reach than email, it is a phenomenon that is hard to ignore.

In our opinion, organizations can harness the power of social networking to their advantage. Social networking in a controlled environment can fill the need of digital social connections for the employees without the organization losing any productivity. Creating employees virtual identities at work allows them to do much more than just work and email. We are witnessing a change in the way people communicate with each other. Still, email is heavily used as the primary source of communication. It is time we change so that communication flow keeps up with technology and broad trends.

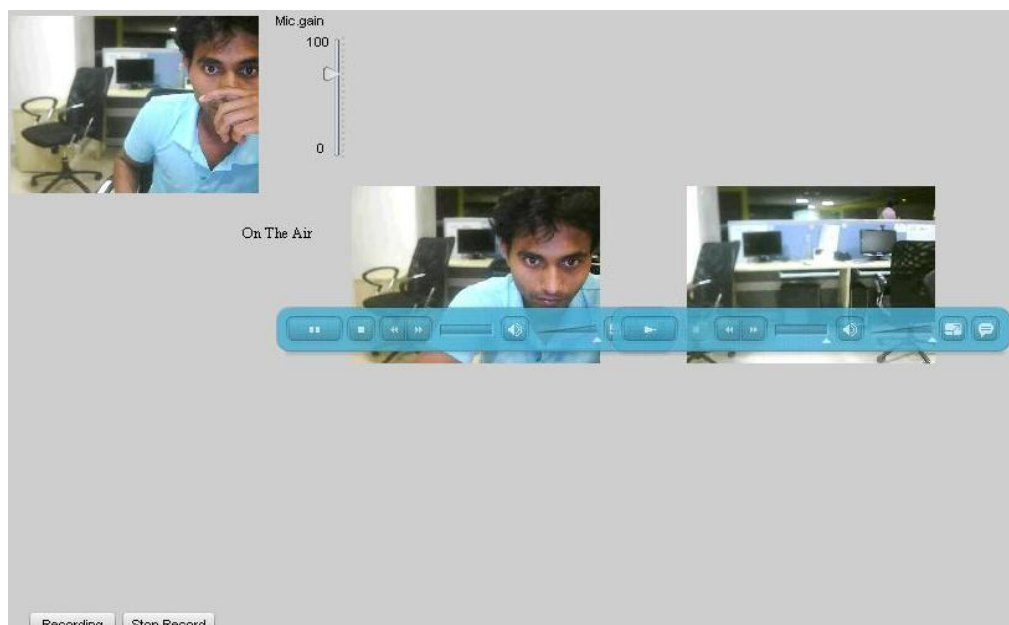


bConnect is an intranet based social networking and business collaboration suite. It works at an intra-office and inter-office level. Communication is slowly moving from a dissemination of information to recipients seeking the desired information from you. Social Interaction constitutes the core of bConnect.



bConnect has all the tools that an employee requires to perform his tasks. Email, File Sharing, Calendars, Web-meetings, Web-chats, VoiP and Project management tools are just some of the features that have been devised to aid employees in that regard. The multicasting upgrade recently launched on Bconnect even makes your video conferencing requirements easier and simpler with facility for multiple participants to interact with each other.

On the social networking side, bConnect can be used by the organization's human resource team to organize contests, events and to improve the communication between employees. To strike a chord between the professional utilities and the social networking side, we have incorporated Business Intelligence features that help the organization monitor the usage of the various features to iron out any perceived deviances from the purpose. Add to it, SMS, GPRS and Voice capabilities and you have a product that is capable of revolutionizing the way in which we communicate with each other at work.



An organization no longer needs to buy expensive software like operating systems, office software, file sharing software etc. that come with hidden cost. It does not need to buy web conferencing facilities that are also very expensive (Rs.3 per user per minute). On the other hand, multiple platforms are currently serving organizations that need access to information (SAP, Siebel, MS Sharepoint). Bconnect can be accessed from any browser and internet enabled workstation. Even from your iPad or iTouch. Our solution comes with no hidden costs and all costs are bundled into the CAL fees per user. Our user fees are very affordable considering the value add.

bConnect is the future of communication. It combines the traditional tools that we use at work to the new world of social networking to create a user experience that is efficient, fun and cost effective.

Key Features:

bConnect delivers a comprehensive set of integrated social networking features, collaboration, and business software features. Here is a partial list of the many features available in the bConnect Platform:

General features

- Customizable Layout and Design
- Flexible Signup
- Secure Login
- User Profile
- Privacy options

Community driven content

- Commenting
- Photo albums
- Event manager / calendar
- Video sharing

Online Interaction

- Friends
- Discussion forums
- Private internal messaging and online chatting
- Groups and Communities
- Wall Posts and Status Updates

Corporate Features

- Web meeting
- Document and File sharing
- Video conferencing

Platform Management

- Workflows
- Third party Integration Capabilities
- Multiple Deployment Options
- Multi-level Content Moderation

- Abuse and Spam Management
- Email Template Management
- Rich Permission System



Corporate office:

309, Creative Industrial Estate,
N.M.JoshiMarg, Lower Parel (E), Mumbai 400 013,
Tel: +91 22 4322 7575, Fax: +91 22 4322 7512
www.bsmart.in

Regd. Office:

Smart Wireless Pvt. Ltd.
135 Continental Bldg., Dr. Annie Beasant Road,
Worli, Mumbai – 400 018

All copyrights @bSmart